

Université de Strasbourg
UFR des Sciences historiques
Institut des Antiquités
nationales
Art, histoire et civilisations de l'Europe
Archéologie

Univerzita Karlova v Praze
Filozofická fakulta
Ústav pro pravěk a ranou
dobu dějinnou
Pravěká a středověká
archeologie

Thèse

pour obtenir le grade de docteur de l'Université de Strasbourg
présentée et soutenue publiquement le 25 septembre 2010

Disertační práce

Gilles Pierrevelcin

Les relations entre la Bohême et la Gaule du IV^e au I^{er} s. av. J.-C.

Vztahy mezi Čechami a Galií ve 4. až 1. stol. př. Kr.

Volume 2 : annexes – Díl 2: přílohy

Sous la direction de – Vedoucí práce :

Prof. Dr. Anne-Marie Adam
doc. PhDr. Vladimír Salač, CSc.

Jury – Komise :

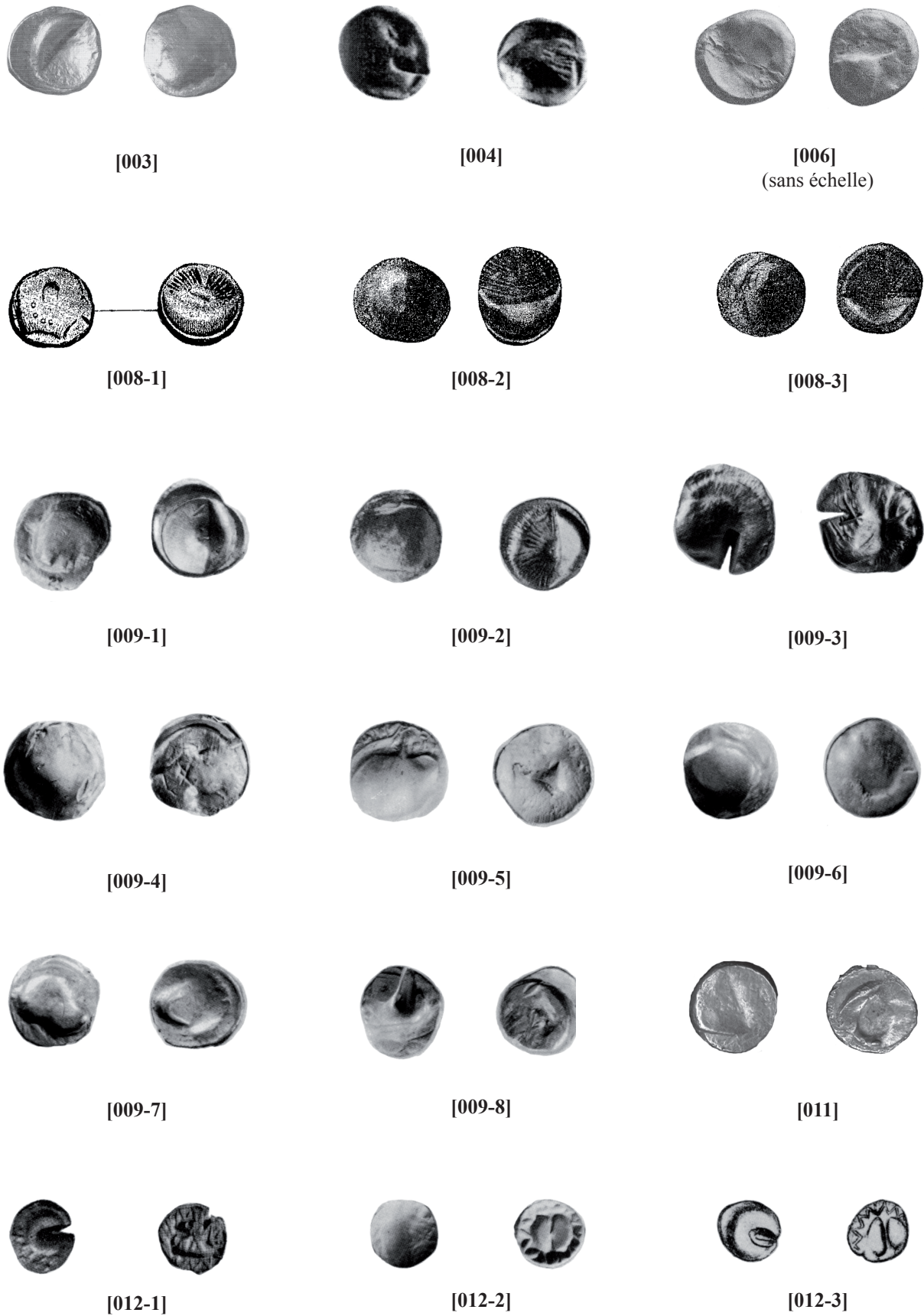
Prof. Dr. Anne-Marie Adam (Professeur, Université de Strasbourg)
Dr. Loup Bernard (Maître de conférences, Université de Strasbourg)
Prof. PhDr. Jan Bouzek, DrSc. (Professeur, Univerzita Karlova v Praze)
Prof. Dr. Stephan Fichtl (Professeur, Université de Tours)
Dr. HDR Jean-Paul Guillaumet (Directeur de recherche, CNRS)
doc. PhDr. Vladimír Salač, CSc. (Directeur de recherche, Univerzita Karlova v Praze,
Akademie věd České Republiky)
Prof. Dr. Susanne Sievers (Seconde Directrice, Römisch-Germanische Kommission)

SOMMAIRE

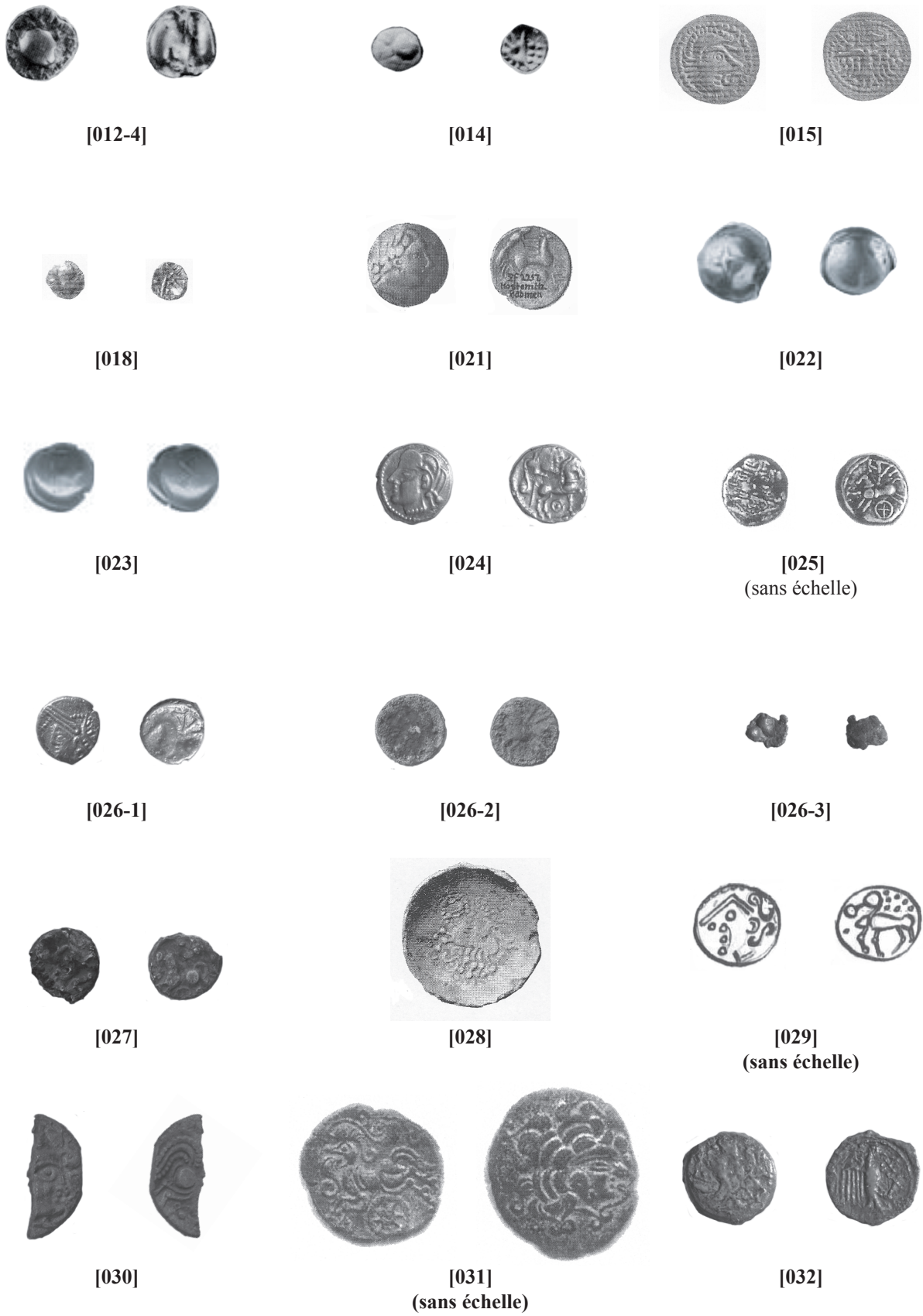
ANNEXE A. TABLEAUX	466
Annexe A.1. Rites et pratiques funéraires à LT A et LT B, d'après <i>Lorenz 1978a</i>	467
Annexe A.2.1. Types de marqueurs par catégories.....	469
Annexe A.2.2. Types de marqueurs par datations.....	471
Annexe A.2.3. Types de marqueurs par régions d'origine.....	473
Annexe A.2.4. Marqueurs de Bohême en Gaule, par datations.....	475
Annexe A.2.5. Marqueurs de Gaule en Bohême, par datations.....	477
Annexe A.3. Marqueurs de contacts Bohême-Gaule en Allemagne du sud et Autriche..	479
ANNEXE B. LISTES DE SITES RELATIVES AUX CARTES DE RÉPARTITION ..	483
ANNEXE C. CATALOGUE	523
ANNEXE D. PLANCHES	589

ANNEXE D

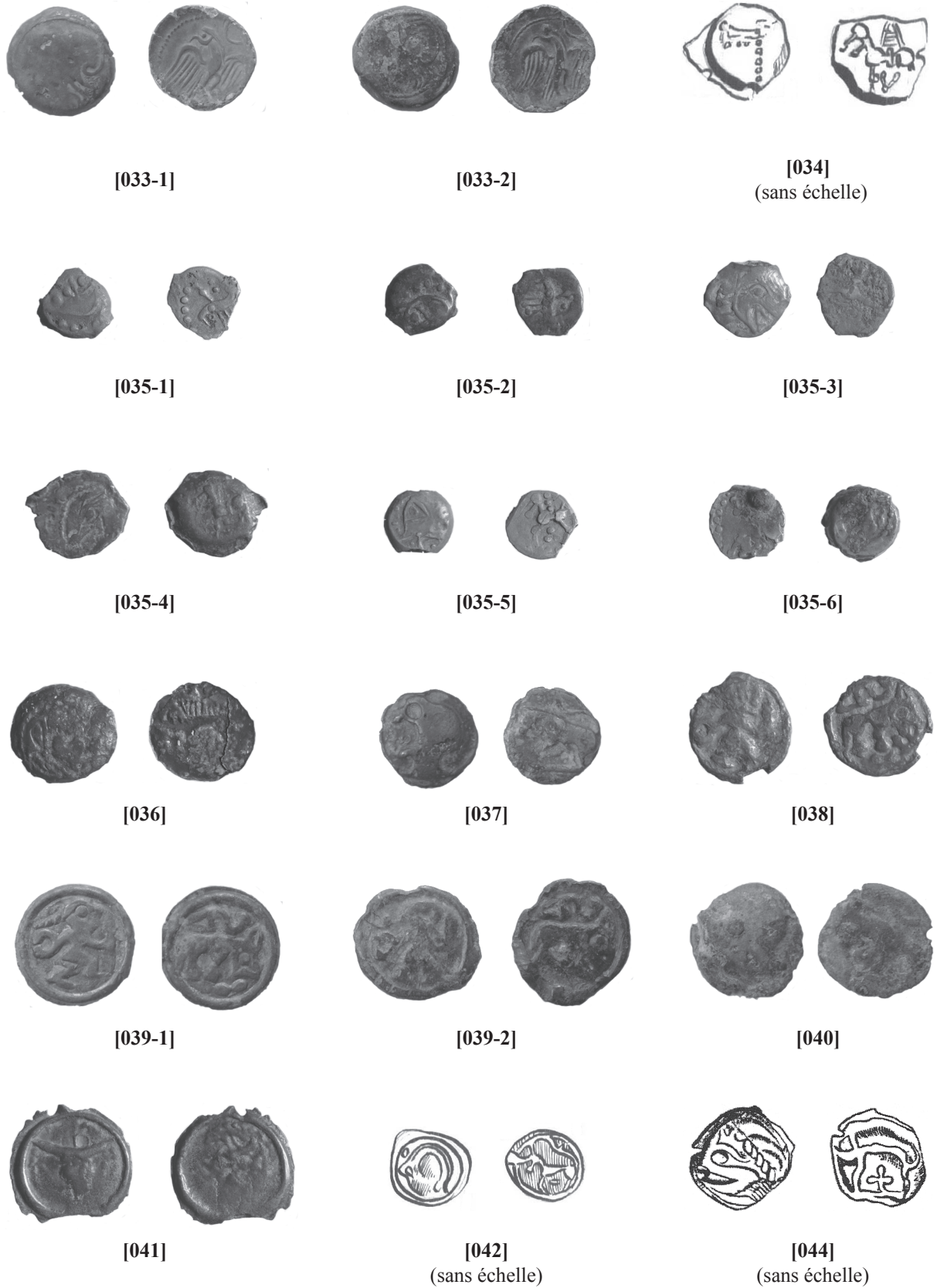
PLANCHES



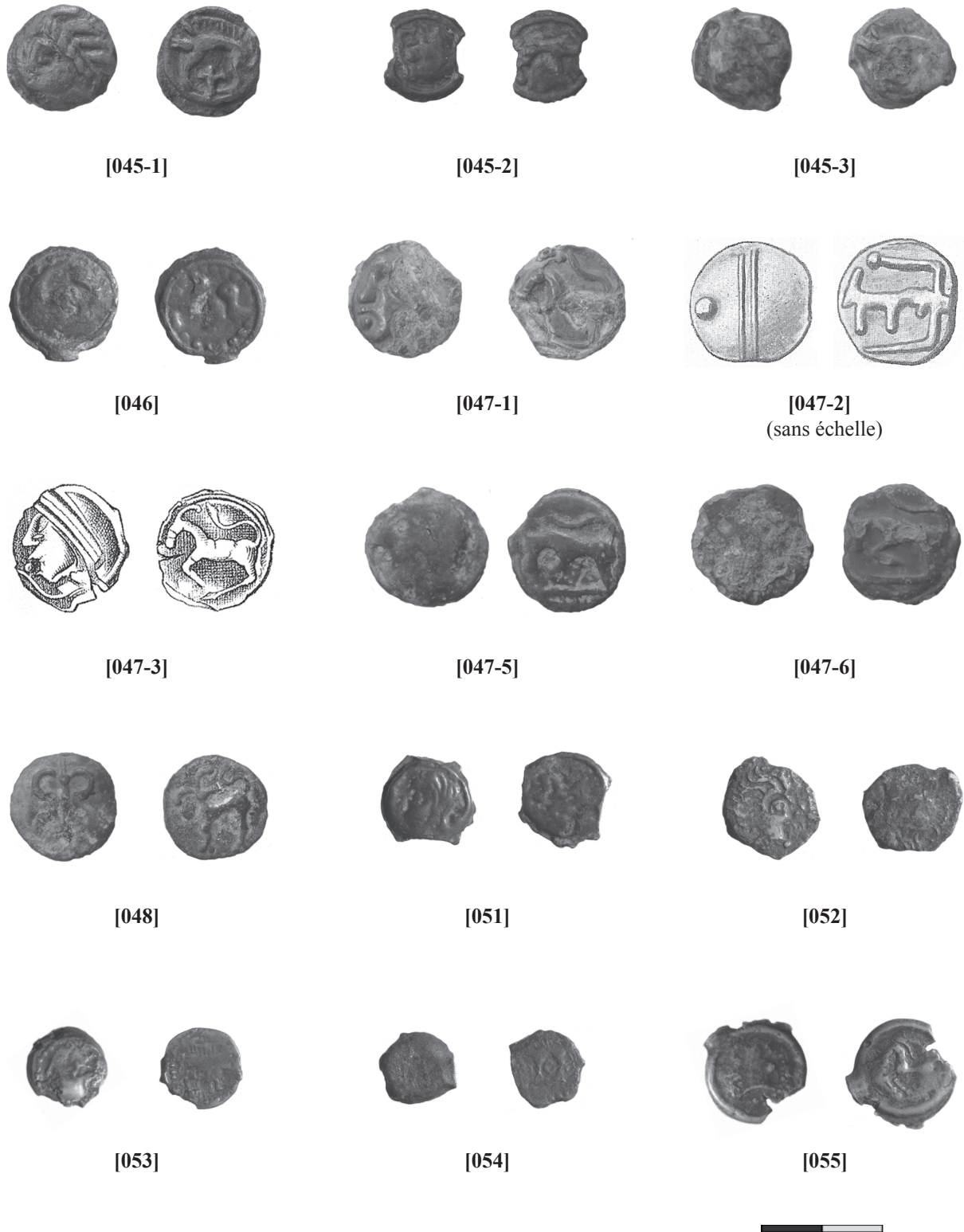
Pl. 1. [003]. Wauwil *Wauwilermoos* (Kellner 1984, p. 125, fig. 3) ; [004]. Fischingen (Wielandt 1964, p. 102 n° 13d) ; [006]. Köln (Paulsen 1933, pl. 14: 300) ; [008-1]. Environs de Mulhouse (Forrer 1925, pl. III, fig. 62) ; [008-2]. Environs de Mulhouse (Forrer 1925, pl. III, fig. 63) ; [008-3]. Environs de Mulhouse (Forrer 1925, pl. III, fig. 64) ; [009-1]. Saint-Louis (Furger-Gunti 1982, fig. 9: 7) ; [009-2]. Saint-Louis (Furger-Gunti 1982, fig. 9: 8) ; [009-3]. Saint-Louis (Furger-Gunti 1982, fig. 10: 66) ; [009-4]. Saint-Louis (Furger-Gunti 1982, fig. 10: 67) ; [009-5]. Saint-Louis (Furger-Gunti 1982, fig. 11: 68) ; [009-6]. Saint-Louis (Furger-Gunti 1982, fig. 11: 69) ; [009-7]. Saint-Louis (Furger-Gunti 1982, fig. 11: 70) ; [009-8]. Saint-Louis (Furger-Gunti 1982, fig. 11: 71) ; [011]. Saverne *Fossé des Pandours* (Fichtl 2002, p. 179) ; [012-1]. Saint-Louis (Furger-Gunti 1982, fig. 9: 27) ; [012-2]. Saint-Louis (Furger-Gunti 1982, fig. 9: 28) ; [012-3]. Saint-Louis (Furger-Gunti 1982, fig. 9: 29). Ech. 1/1



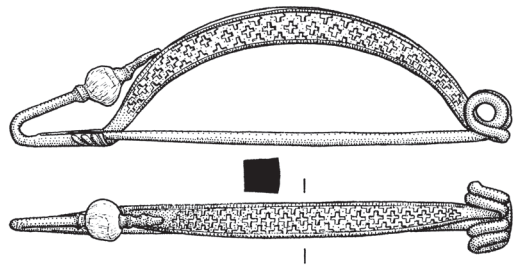
Pl. 2. [012-4]. Saint-Louis (*Furger-Gunti 1982*, fig. 9: 30) ; [014]. Saint-Louis (*Furger-Gunti 1982*, fig. 9: 31) ; [015]. Lindau (*Kellner 1990*, pl. 57: 2209) ; [018]. Lindau (*Kellner 1990*, pl. 57: 2206-2207) ; [021]. Hostomice (*Jenny 1931*, fig. 2) ; [022]. Ořech (*Militký 2007*, p. 167) ; [023]. Řevničov (*Militký 2007*, p. 167) ; [024]. Stradonice (Photo *NM Praha*, n° 27.297) ; [025]. Obří Hrad ? (*Militký 2001*, fig. 1:3) ; [026-1]. Stradonice (Photo *NM Praha*, n° 27.309) ; [026-2]. Stradonice (Photo *G. Pierrevelcin*, n° 235.562) ; [026-3]. Stradonice (Photo *NM Praha*, n° 27.320) ; [027]. Stradonice (Photo *G. Pierrevelcin*, n° 235.500) ; [028]. Stradonice (*Piř 1906*, pl. II: 41) ; [029]. Stradonice (*NM Praha*, n° 27. 298) ; [030]. Stradonice (Photo *G. Pierrevelcin*, n° 235.499) ; [031]. Závist (*Waldhauser 2001b*, fig. 15) ; [032]. Stradonice (Photo *NM Praha*, n° 27.340). Ech. 1/1



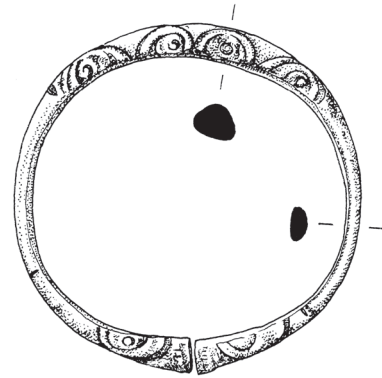
Pl. 3. [033-1]. Stradonice (Photo *G. Pierrevelcin*, n° 235.501) ; [033-2]. Stradonice (Photo *G. Pierrevelcin*, n° 235.502) ; [034]. Chomutov (*NM Praha*, n° 27.331) ; [035-1]. Stradonice (Photo *NM Praha*, n° 27.335) ; [035-2]. Stradonice (Photo *NM Praha*, n° 27.305) ; [035-3]. Stradonice (Photo *NM Praha*, n° 27.306) ; [035-4]. Stradonice (Photo *NM Praha*, n° 27.307) ; [035-5]. Stradonice (Photo *NM Praha*, n° 27.313) ; [035-6]. Stradonice (Photo *NM Praha*, n° 27.344) ; [036]. Stradonice (Photo *NM Praha*, n° 27.339) ; [037]. Stradonice (Photo *NM Praha*, n° 27.337) ; [038]. Chomutov (Photo *NM Praha* n° 27.330) ; [039-1]. Stradonice (Photo *G. Pierrevelcin*, n° 235.505) ; [039-2]. Stradonice (Photo *G. Pierrevelcin*, n° 235.506) ; [040]. Třisov (Photo *G. Pierrevelcin*, n° 235.415) ; [041]. Stradonice (Photo *NM Praha*, n° 27.334) ; [042]. Stradonice (*NM Praha*, n° 27.333) ; [044]. Kolin (*Waldhauser 2001a*, fig. Kolín 9:1). Ech. 1/1



Pl. 4. [45-1]. Stradonice (Photo *G. Pierrevelcin*, n° 235.507) ; [45-2]. Stradonice (Photo *G. Pierrevelcin*, n° 27.338) ; [45-3]. Stradonice (Photo *G. Pierrevelcin*, n° 235.508) ; [046]. Pisek (Photo *NM Praha*, n° 27.332) ; [047-1]. Stradonice (Photo *G. Pierrevelcin*, n° 235.565) ; [047-2]. Stradonice (*Forrer 1908*, fig. 484) ; [047-3]. Stradonice (*Déchelette 1901*, pl. II, 5) ; [047-5]. Stradonice (Photo *G. Pierrevelcin*, n° 235.509) ; [047-6]. Stradonice (Photo *G. Pierrevelcin*, n° 235.510) ; [048]. Stradonice (Photo *G. Pierrevelcin*, n° 235.511) ; [051]. Stradonice (Photo *NM Praha*, n° 27.336) ; [052]. Stradonice (Photo *NM Praha*, n° 27.341) ; [053]. Stradonice (Photo *NM Praha*, n° 27.342) ; [054]. Stradonice (Photo *NM Praha*, n° 27.343) ; [055]. Stradonice (Photo *NM Praha*, n° 27.345). Ech. 1/1



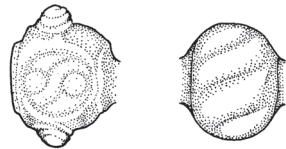
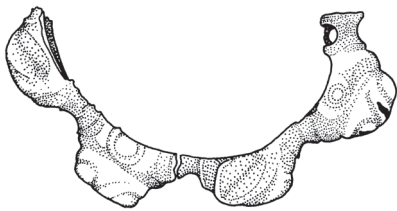
[056]



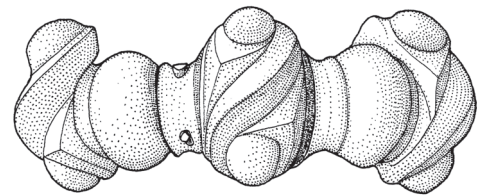
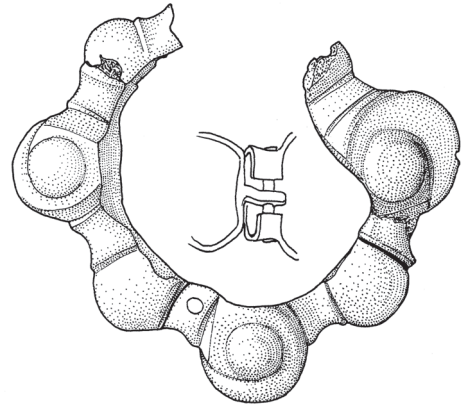
[057]



[058]



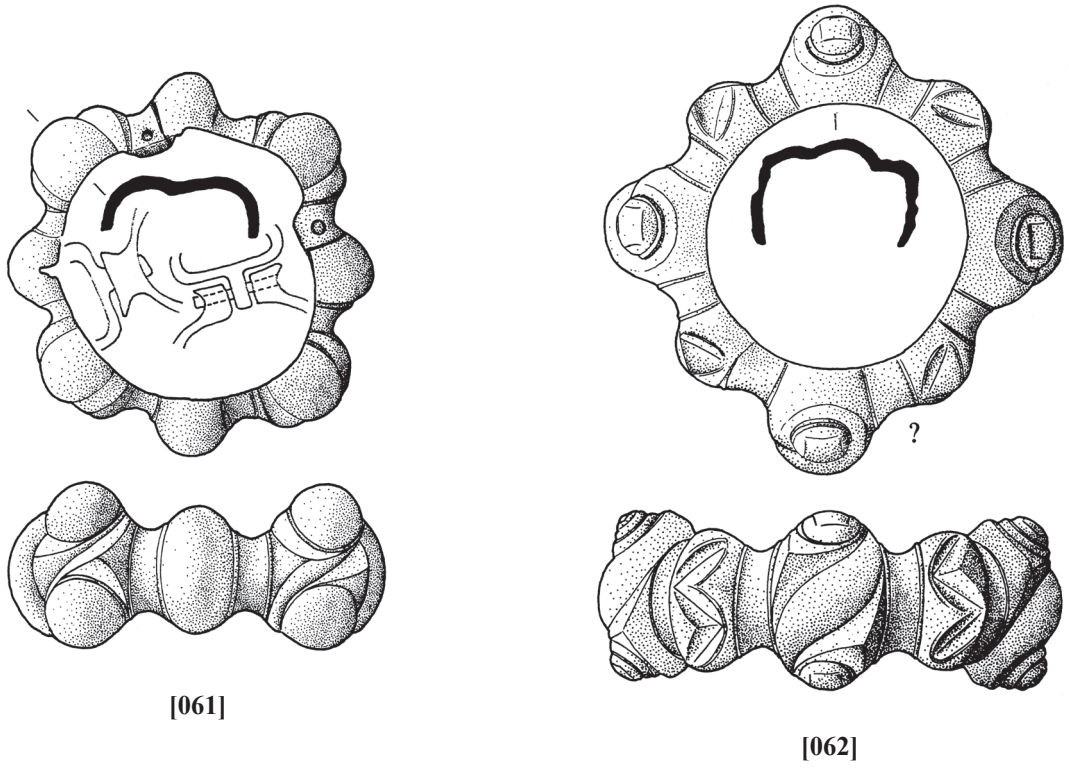
[060]



[059]

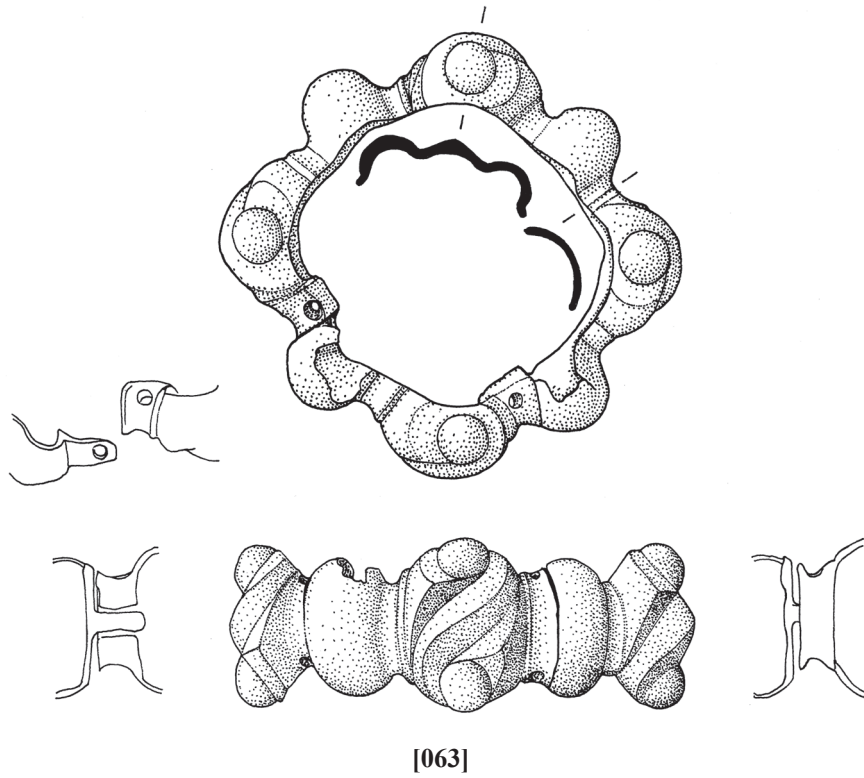


Pl. 5. [056]. Saint-Sulpice (*Kaenel 1990*, pl. 39: 41-1) ; [057]. Bière (*Kaenel 1990*, pl. 8: 6) ; [058]. Aarberg (*Tanner 1979b*, pl. 1: 1) ; [059]. Chesalles-sur-Oron (*Kaenel 1990*, pl. 9/T1: 5) ; [060]. Frauenfeld (*Tanner 1979a*, pl. 8: 1). Ech. 2/3



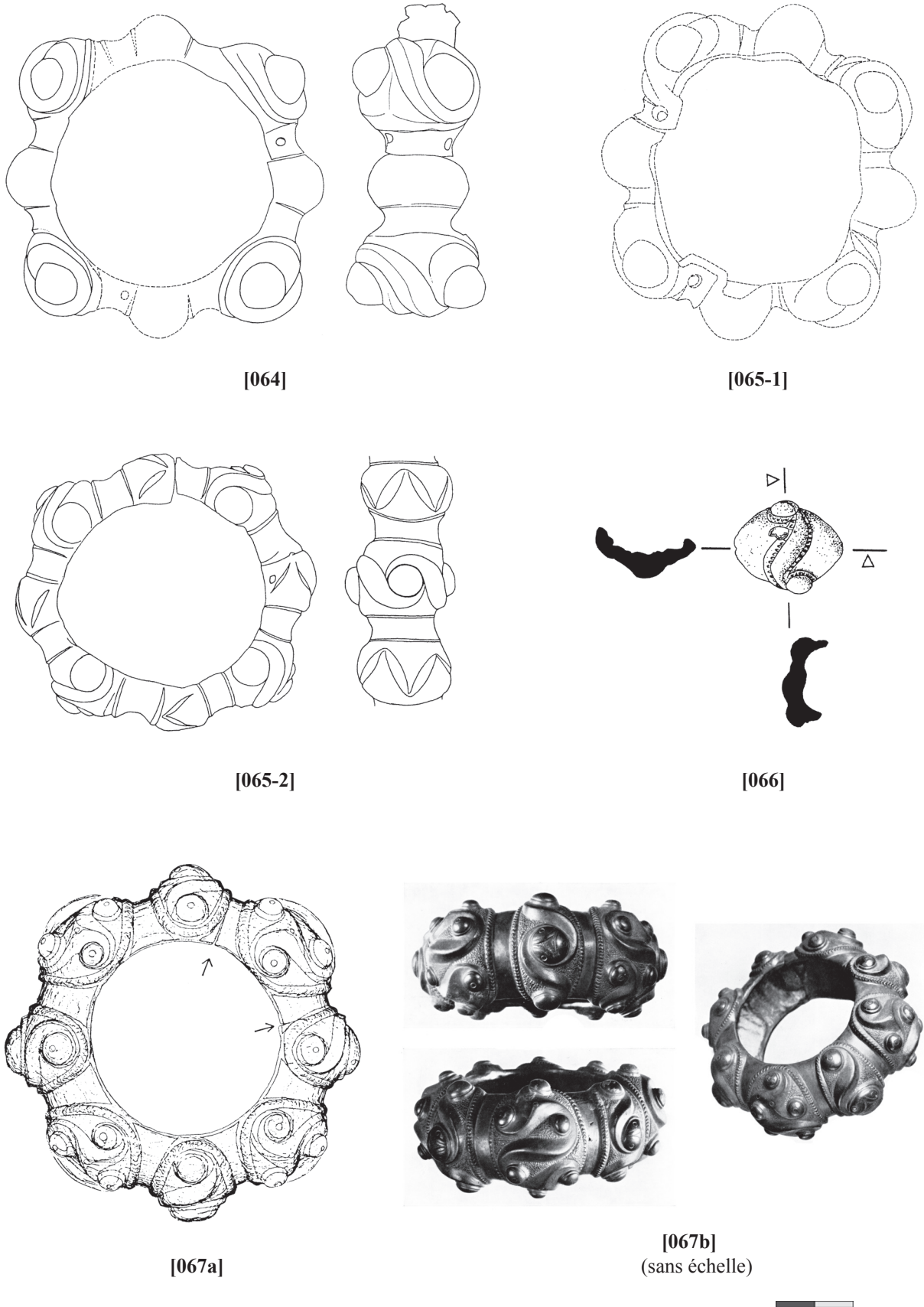
[061]

[062]

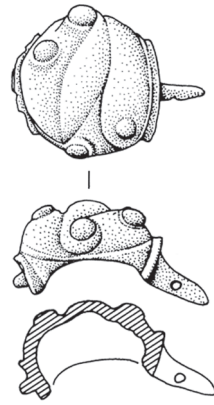


[063]

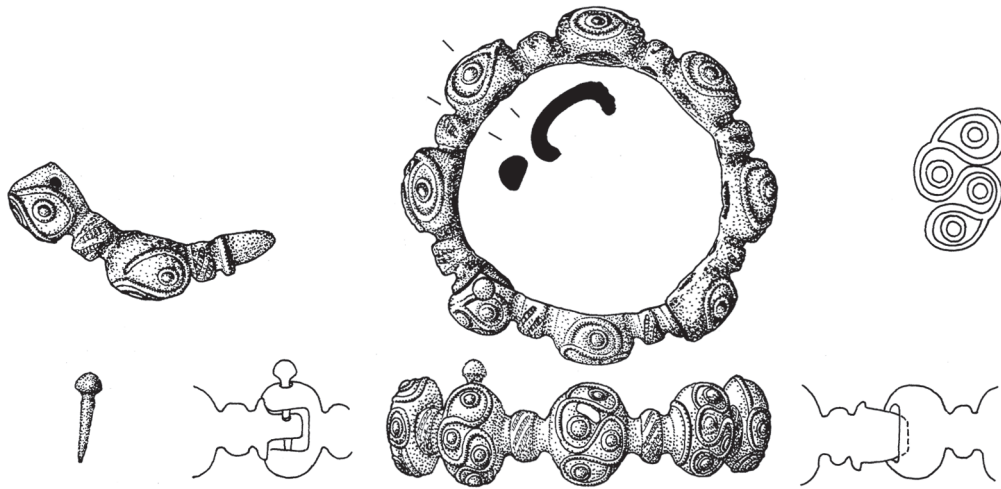
Pl. 6. [061]. Gruyères (*Kaenel 1990*, pl. 74/T1: 3) ; [062]. Gruyères (*Kaenel 1990*, pl. 74/T7: 5) ; [063]. Longirod (*Kaenel 1990*, pl. 17/T1: 4). Ech. 2/3



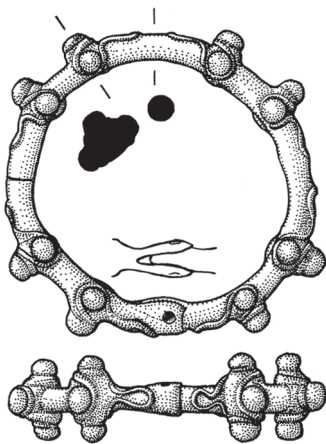
Pl. 7. [064]. Münsingen-Rain (*Hodson 1968*, pl. 33: 569) ; [065-1]. Münsingen-Rain (*Hodson 1968*, pl. 64: 405) ; [065-2]. Münsingen-Rain (*Hodson 1968*, pl. 64: 406) ; [066]. Joyeuse / Lablachère (*Perrin 1993*, fig. 3) ; [067a]. La Rivière-sur-Tarn (*Boudet 1995*, fig. 1) ; [067b]. La Rivière-sur-Tarn (*Jacobsthal 1969*, n° 275, pl. 150). Ech. 2/3



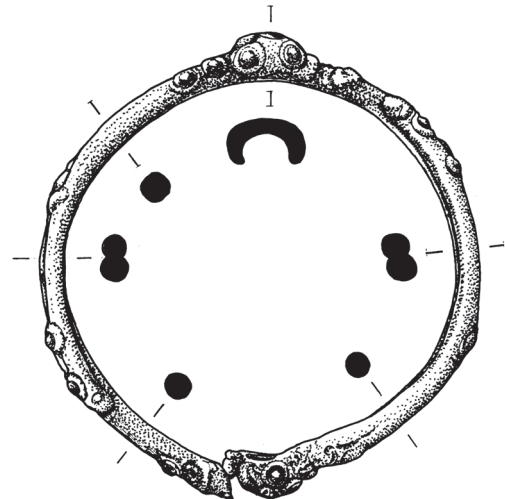
[068]



[069]



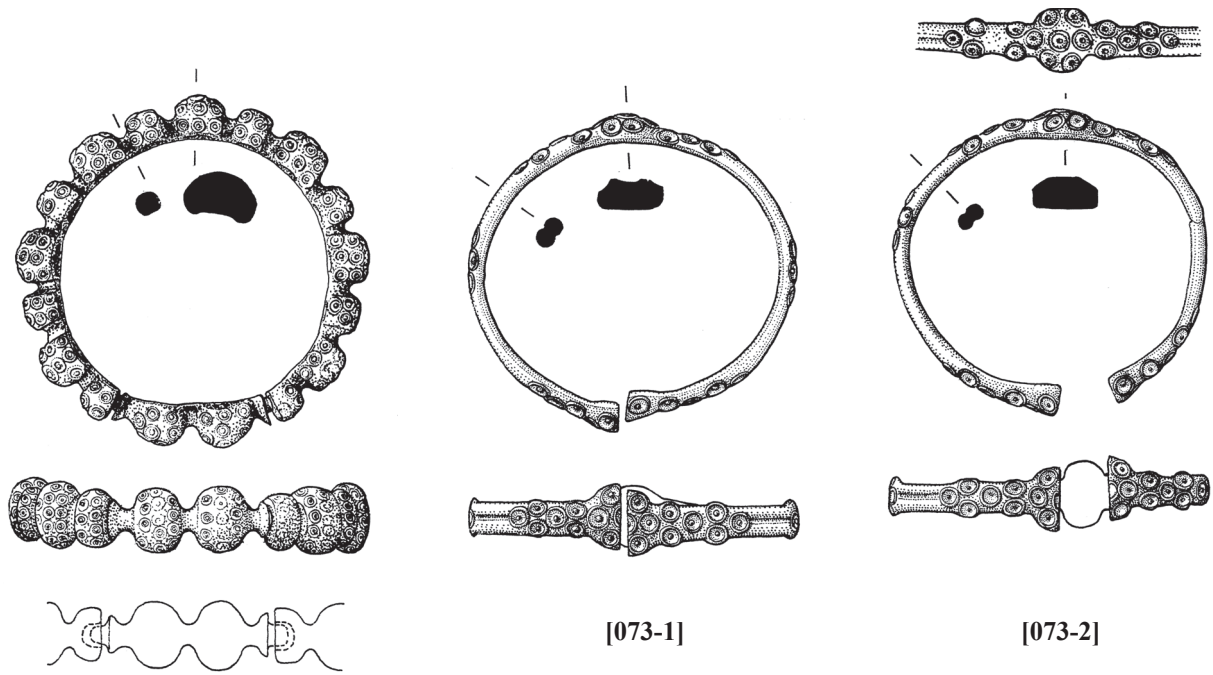
[070]



[071]



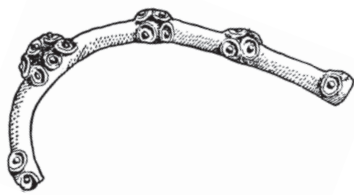
Pl. 8. [068]. Vaison-la-Romaine (*Robin 2006*, fig. 30 pl. 15) ; [069]. Lausanne (*Kaenel 1990*, pl. 16: Lausanne-1) ; [070]. Saint-Sulpice (*Kaenel 1990*, pl. 55: 87-1) ; [071]. Prilly (*Kaenel 1990*, pl. 23: 53-1). Ech. 2/3



[072]

[073-1]

[073-2]



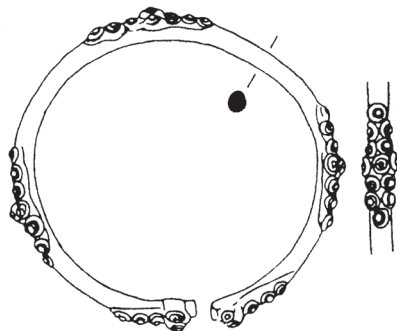
[074a]



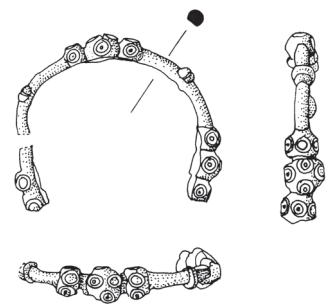
[074b]
(sans échelle)



[075-1]



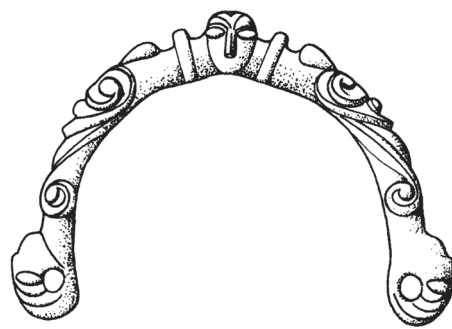
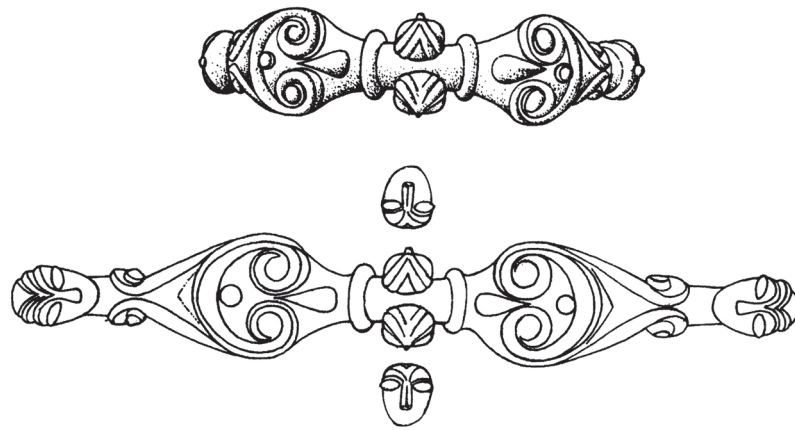
[075-2]



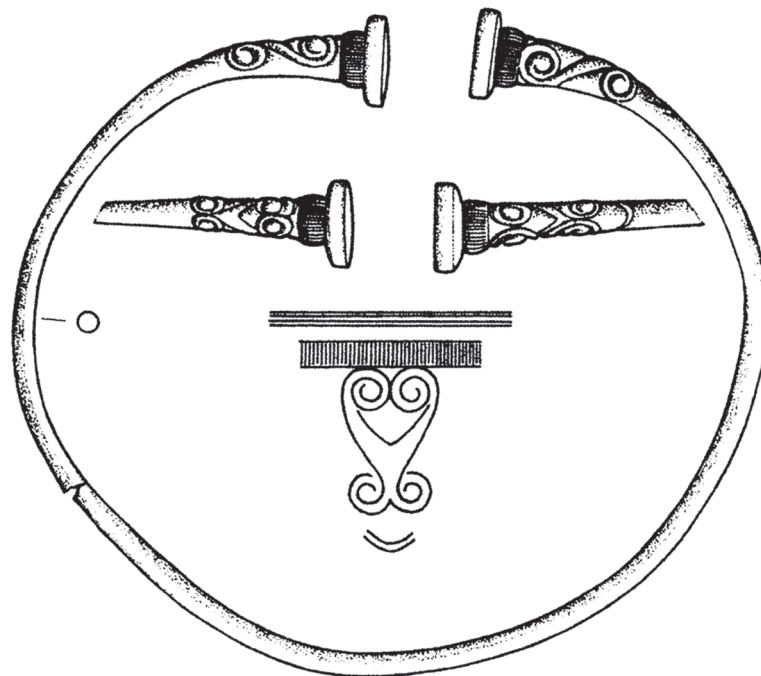
[076]



Pl. 9. [072]. Saint-Sulpice (*Kaenel 1990*, pl. 26: 62-2) ; [073-1]. Saint-Sulpice (*Kaenel 1990*, pl. 54: 77-4) ; [073-2]. Saint-Sulpice (*Kaenel 1990*, pl. 54: 77-5) ; [074a]. Buzens (*Mohen 1979*, fig. 4: 10) ; [074b]. Buzens (*Labrousse 1964*, fig. 2) ; [075-1]. Corroy (*Charpy 1991*, fig. p. 189) ; [075-2]. Corroy (*Charpy 1991*, fig. p. 189) ; [076]. Larina (*Perrin 1991*, fig. 9: 3). Ech. 2/3



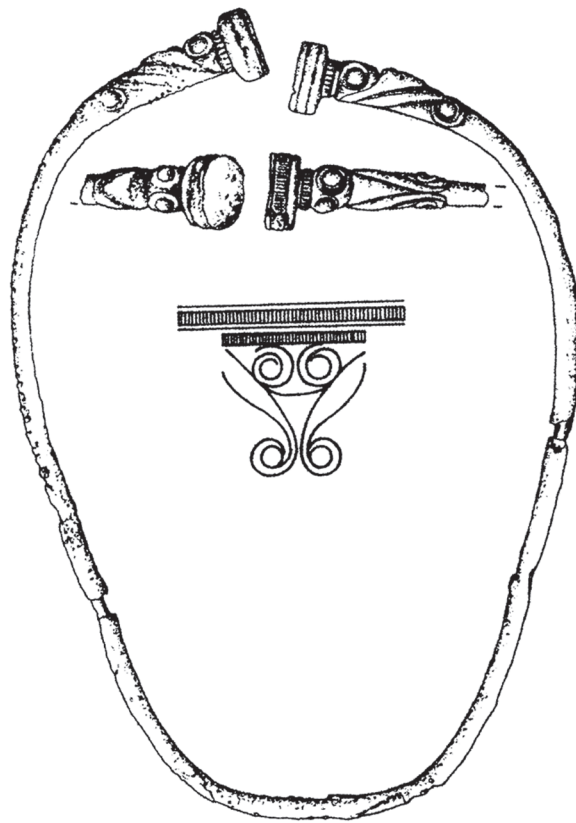
[077]



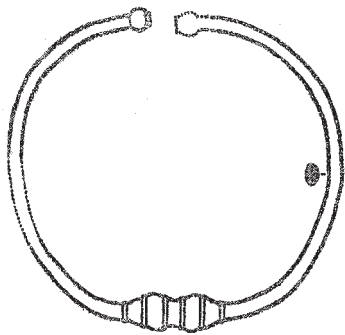
[078]
(env. 2/3)



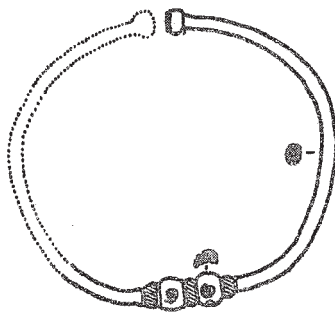
Pl. 10. [077]. Environs de Vodňaný (*Sankot 2003*, fig. 10) ; [078]. Sulejovice (*Sankot 2003b*, fig. 9b). Ech. 2/3



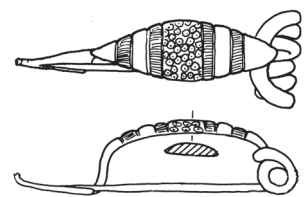
[079]



[080-1]



[080-2]



[081]



Pl. 11. [079]. Vitov (*Sankot 2003*, fig. 9a) ; [080-1]. Jenišův Újezd (*Waldhauser 1978*, pl. 20: 8732) ; [080-2]. Jenišův Újezd (*Waldhauser 1978*, pl. 20: 8733-35) ; [081]. Lahošť (*Kruta 1979*, fig. 6: 6). Ech. 2/3



[083a]



[083b]



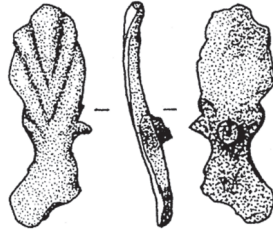
[084]



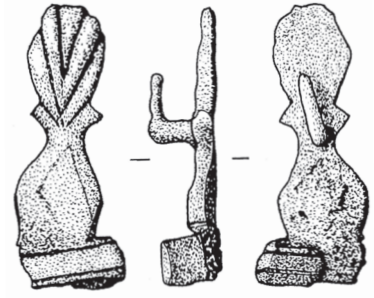
Pl. 12. [083a]. Obrnice (*Pič 1902*, pl. VI:11); [083b]. Obrnice (*Filip 1956*, pl. LVI: 4) ; [084]. Mlčechvosty (Photo *O. Levinský*). Ech. 2/3



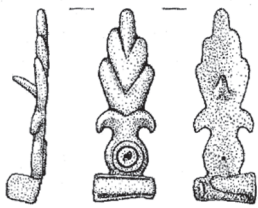
[085]



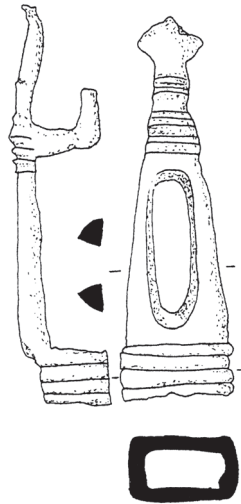
[086-1]



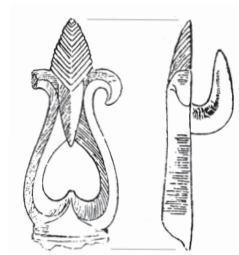
[086-2]



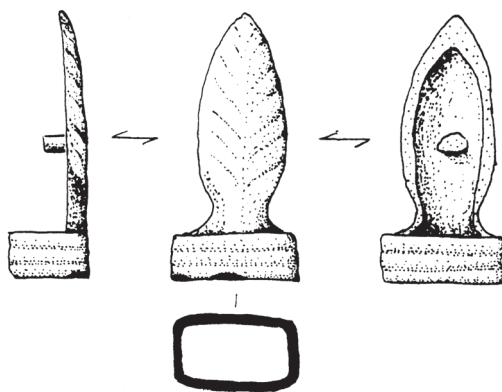
[087]



[088]



[089]



[090]

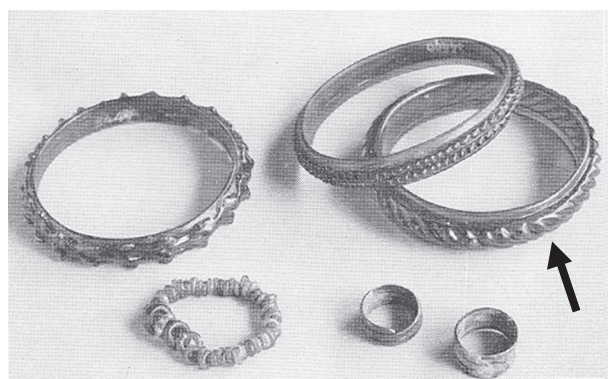


[091]

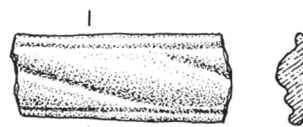


[093]

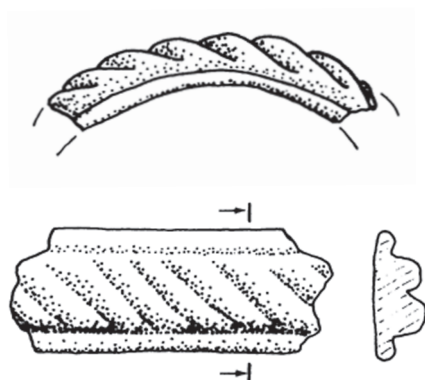
Pl. 13. [085]. Morat (*Agustoni et al. 2008*, fig. 10 g.); [086-1]. Hoppstädten-Weiersbach (*Gleser 2004*, fig. 1: C7); [086-2]. Hoppstädten-Weiersbach (*Gleser 2004*, fig. 1: C8); [087]. Altenburg-Rheinau (*Schreyer, Hedinger 2003*, fig. 4: 4); [088]. La Bure (*Devel 1999*, pl. XI: 115); [089]. Marloux (*Armand-Calliat 1944*, fig. 2); [090]. Villeneuve-Saint-Germain (*Debord 1998*, fig. 11: 1); [091]. Stradonice (*Břeň 1964*, tab. 9 n°343); [093]. Třísov (*Striewe 1996*, pl. 30: K). Ech 2/3



[095]
(sans échelle)



[096]



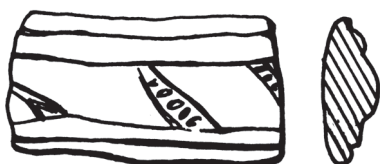
[098]



[100]



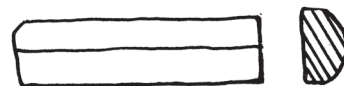
[101]



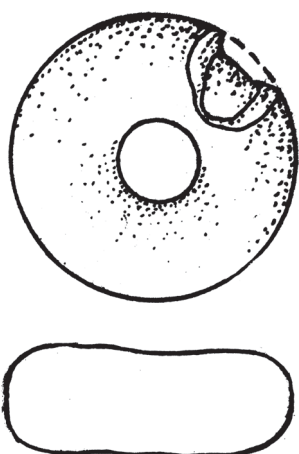
[102]



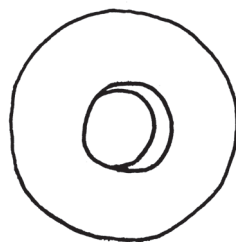
[103-1]



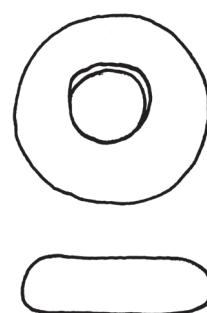
[103-2]



[104-1]



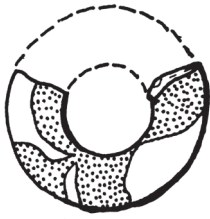
[104-2]



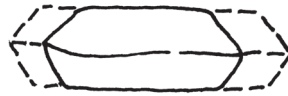
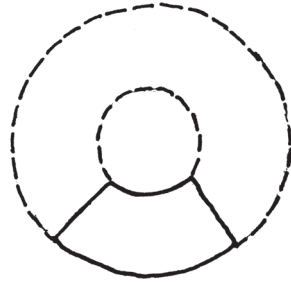
[104-3]



Pl. 14. [095]. Berne-Bümpliz (*Keller-Tarnuzzer 1952*, pl. 10: 2) ; [096]. Trêves (*Gilles 1992*, fig. 9h) ; [098]. Feurs (*Vaginay, Guichard 1988*, fig. 133: 14) ; [100]. Stradonice (*Venclová 1990*, pl. 36: 15) ; [101]. Stradonice (*Venclová 1990*, pl. 38: 6) ; [102]. Lošany (*Venclová 1990*, pl. 27: 5) ; [103-1]. Stradonice (*Venclová 1990*, pl. 34: 1) ; [103-2]. Stradonice (*Venclová 1990*, pl. 35: 9) ; [104-1]. Stradonice (*Venclová 1990*, pl. 47: 6) ; [104-2]. Stradonice (*Venclová 1990*, pl. 54: 6) ; [104-3]. Stradonice (*Venclová 1990*, pl. 54: 8). Ech. 1/1



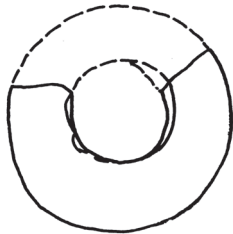
[105]



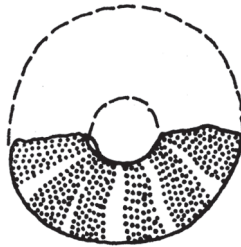
[106-1]



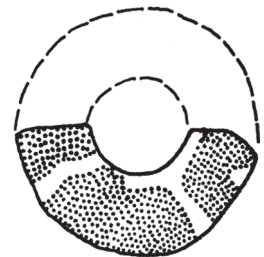
[106-2]



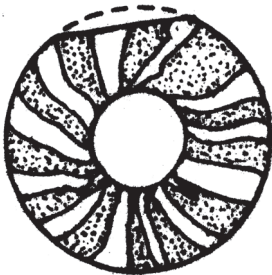
[106-3]



[107-1]



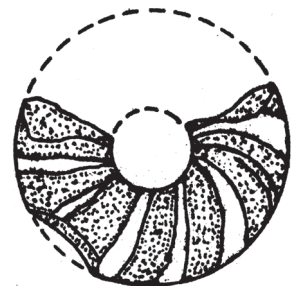
[107-2]



[107-3]



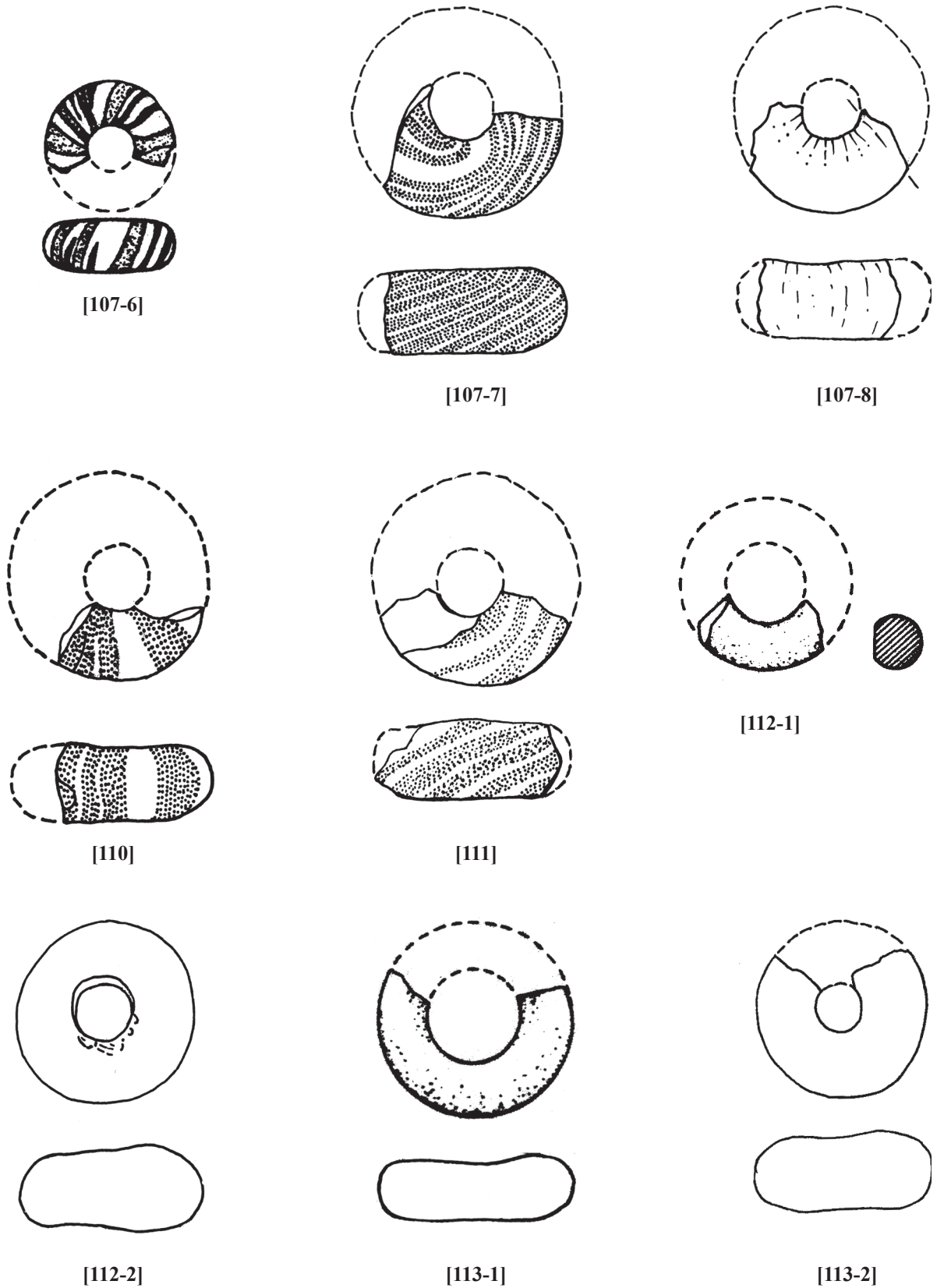
[107-4]



[107-5]

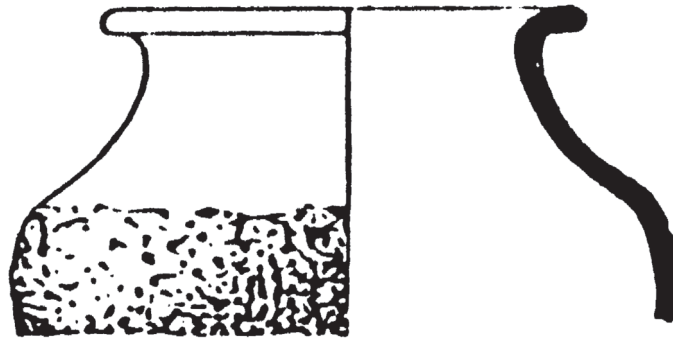


Pl. 15. [105]. Rostoky (Venclová 1990, pl. 29: 15); [106-1]. Stradonice (Venclová 1990, 40: 3); [106-2]. Stradonice (Venclová 1990, pl. 68: 20); [106-3]. Stradonice (Venclová 1990, pl. 55: 8); [107-1]. Stradonice (Venclová 1990, pl. 39: 9); [107-2]. Stradonice (Venclová 1990, pl. 39: 10); [107-3]. Stradonice (Venclová 1990, pl. 46: 13); [107-4]. Stradonice (Venclová 1990, pl. 46: 19); [107-5]. Stradonice (Venclová 1990, pl. 46: 20). Ech. 1/1

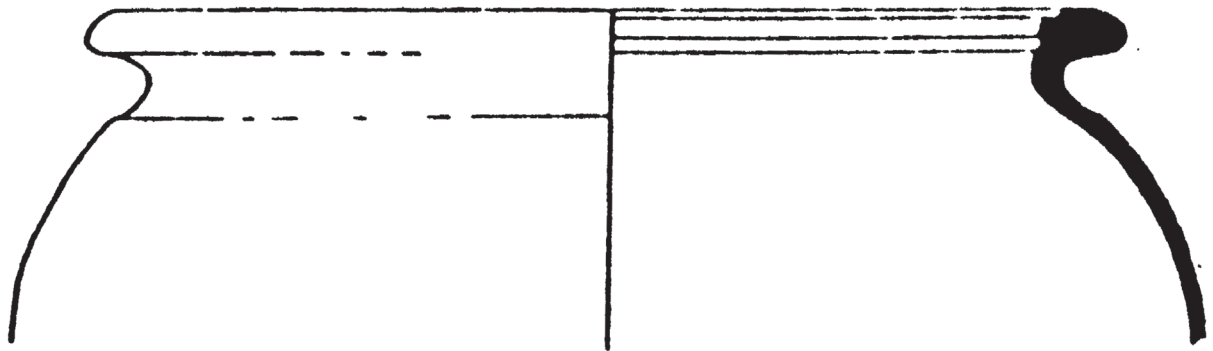


Pl. 16. [107-6]. Stradonice (*Venclová 1990*, pl. 48: 7) ; [107-7]. Stradonice (*Venclová 1990*, pl. 55: 2) ; [107-8]. Stradonice (*Venclová 1990*, pl. 55: 7) ; [110]. Lovosice (*Venclová 1990*, pl. 28: 3) ; [111]. Pařezská Lhota (*Venclová 1990*, pl. 29: 12) ; [112-1]. Stradonice (*Venclová 1990*, pl. 48: 12) ; [112-2]. Stradonice (*Venclová 1990*, pl. 54: 7) ; [113-1]. Stradonice (*Venclová 1990*, pl. 47: 12) ; [113-2]. Stradonice (*Venclová 1990*, pl. 55: 6). Ech. 1/1





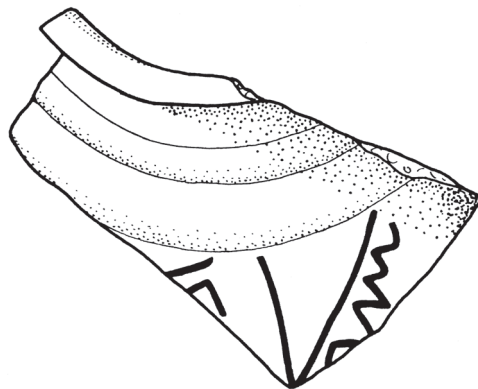
[115]



[116]



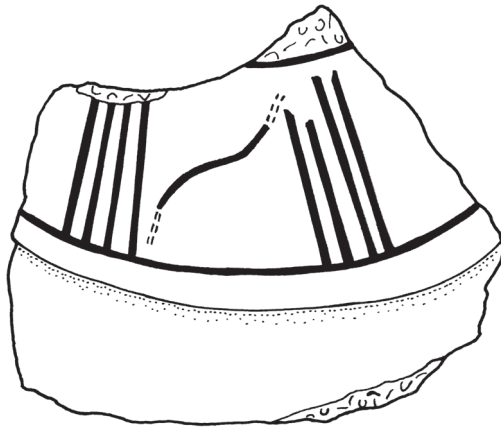
[117]



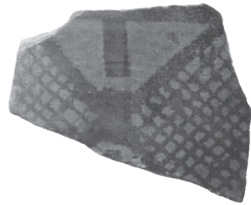
[118]



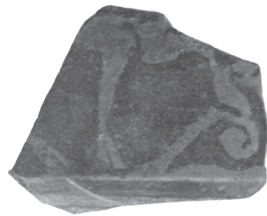
Pl. 17. [115]. Mont-Beuvray (*Drda, Majer 1991*, fig. 2: 1) ; [116]. Mont-Beuvray (*Drda, Majer 1991*, fig. 2: 2) ; [117]. Soběsuky (*Salač, von Carnap-Bornheim 1994*, fig. 1: 1) ; [118]. Stradonice (*Salač, von Carnap-Bornheim 1994*, fig. 1: 3). Ech. 1/2



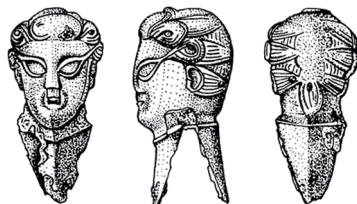
[119]



[120]



[121]



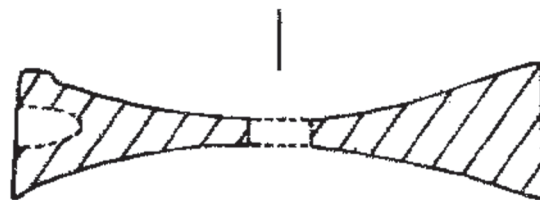
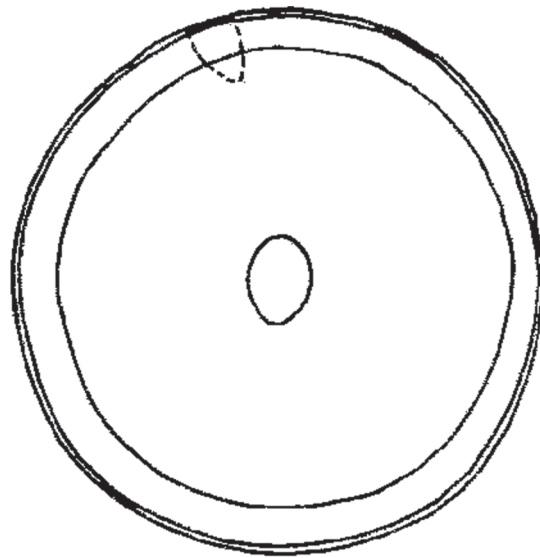
[123]



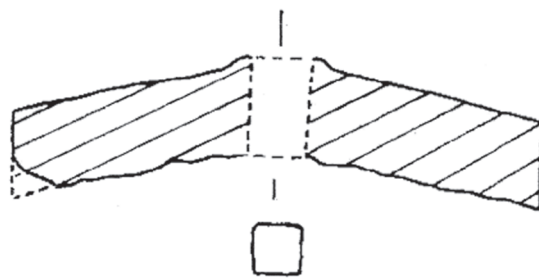
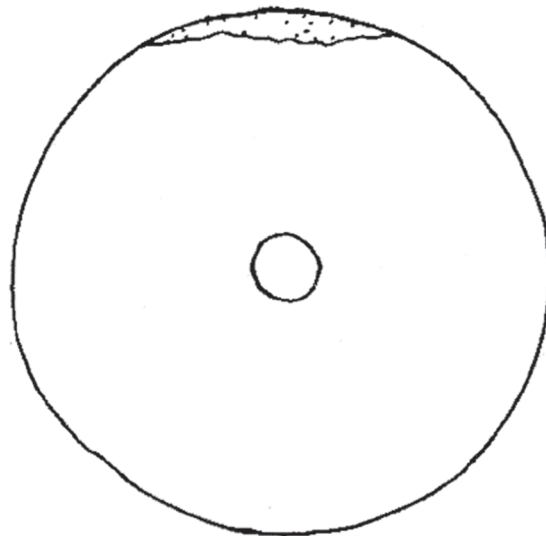
[122]



Pl. 18. [119]. Třísov (*Salač, von Carnap-Bornheim 1994, fig. 1: 4*) ; [120]. Stradonice (*Pič 1903, pl. XLIX, 4*) ; [121]. Stradonice (*Pič 1903, pl. XLIX, 2*) ; [122]. Jenišův Újezd (*Filip 1956, fig. 6: 7*) ; [123]. Stradonice (*Karasová 2002, fig. 4*). Ech. 1/2, 2/3, 1/4



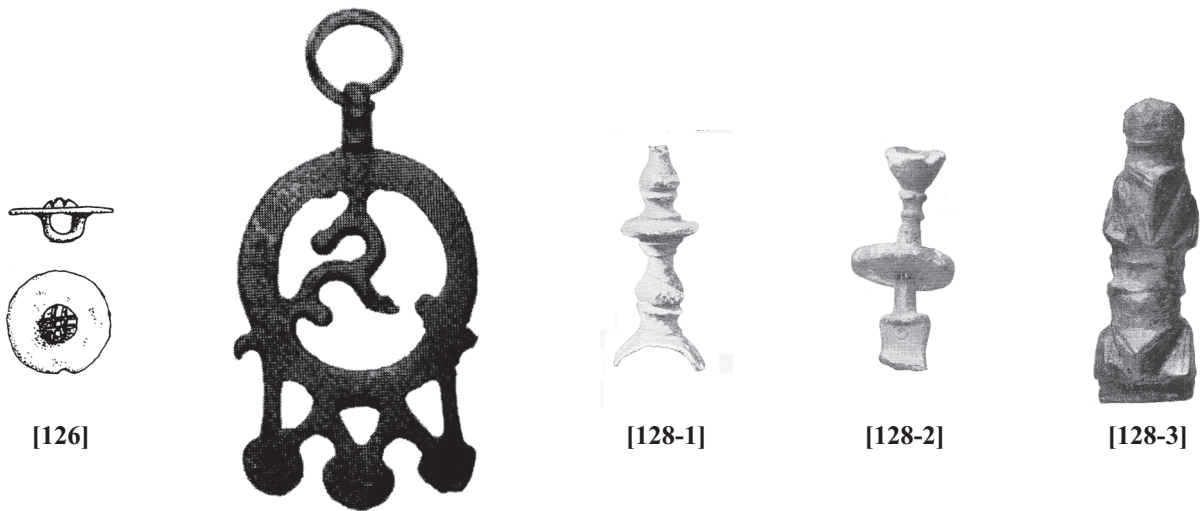
[124]



[125]



Pl. 19. [124]. Starý Kolín ? (*Waldhauser 1981*, fig. 7: 58) ; [125]. Třebušice (*Waldhauser 1981*, fig. 10: 86).
Ech. 1/5



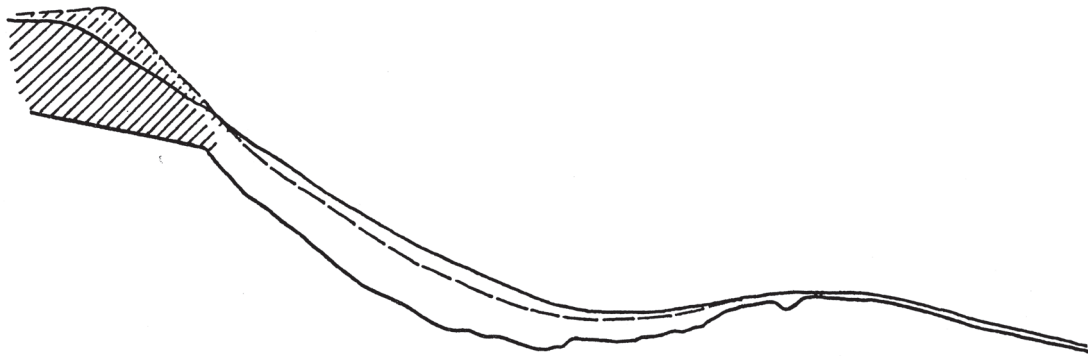
[126]

[127]

[128-1]

[128-2]

[128-3]



[129]
(sans échelle)

Pl. 20. [126]. Titelberg (*Metzler 1995*, fig. 166: 11) ; [127]. Stradonice (*Schönfelder 2002*, fig. 167: 8) ; [128-1]. Stradonice (*Piř 1906*, pl. 23: 14) ; [128-2]. Stradonice (*Piř 1906*, pl. 23: 15) ; [128-3]. Stradonice (*Piř 1906*, pl. 26: 13) ; [129] Závist (*Drda, Rybová 1997*, fig. 13: 4) Ech. 2/3